



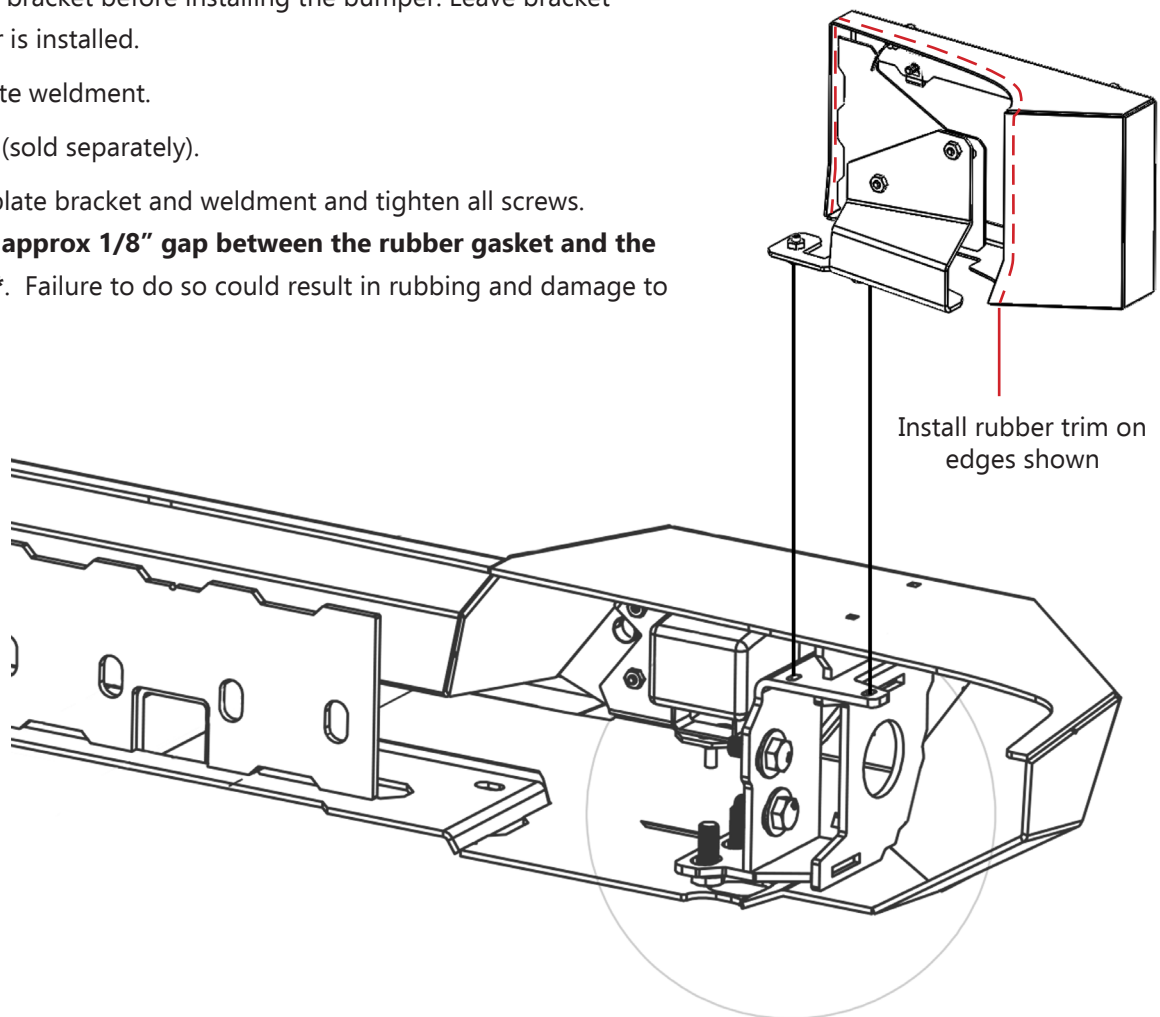
LICENSE PLATE RELOCATION

***PLEASE READ THROUGH THE
INSTRUCTIONS BEFORE BEGINNING
ANY PART OF THE INSTALLATION
PROCESS***

WEB INSTALL LINK: <http://lodoffroad.com/assets/pdfs/JLP1800INS.pdf>

This shows the proper attachment for the license plate mount to LOD Destroyer Rear Bumper

1. Install the mount bracket before installing the bumper. Leave bracket loose when bumper is installed.
 2. Install license plate weldment.
 3. Install bolt lights (sold separately).
 4. Position license plate bracket and weldment and tighten all screws.
- **Be sure to allow approx 1/8" gap between the rubber gasket and the body of the Jeep**.** Failure to do so could result in rubbing and damage to the paint.



Installation on others aftermarket bumpers (NOT LOD Offroad)

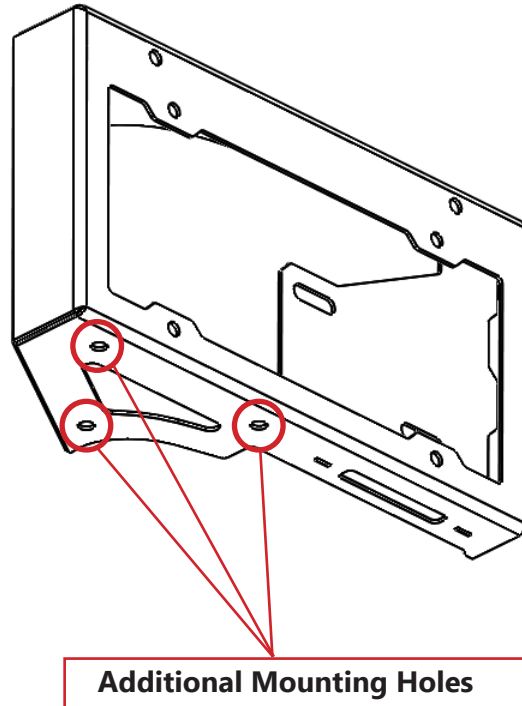
To install the License Plate Relocation Kit on others aftermarket bumpers, we have provided 3 additional mounting holes.

Position the License Plate Frame on your bumper and mark at least 2 of the 3 holes shown for mounting.

****Be sure to leave approx. 1/8" gap between the rubber gasket on the License Plate Frame and the body of the Jeep.**** Failure to do so could cause rubbing and damage to the paint.

Drill the mounting holes in your bumper using $\varnothing 1/4"$ or $\varnothing 5/16$ drill bit. Be sure to clean up the holes and touch up with paint to prevent rust.

Mount securely using $\varnothing 1/4"$ or $\varnothing 5/16"$ bolts. Mounting hardware is not included for mounting to others aftermarket bumpers and is the customers responsibility.



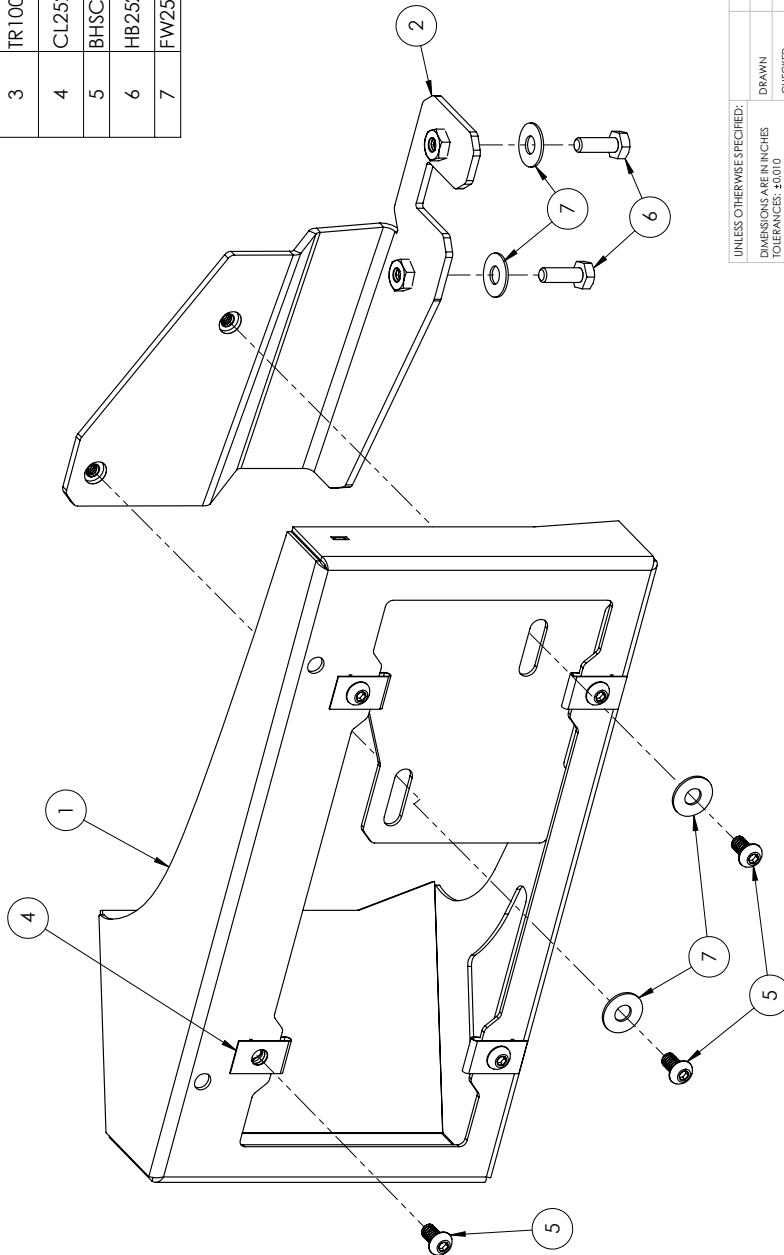
This License Plate Relocation Kit was designed to fit LOD Offroad Destroyer Rear Bumpers and Tire Carriers only.

****LOD Offroad cannot will not gaurantee fit on any others aftermarket bumpers. ****

ITEM NO.	PART NUMBER	DESCRIPTION	QTY.
1	4JLP1800-01	LICENSE PLATE WELDMENT	1
2	4JLP1800-02	LICENSE PLATE MOUNT	1

STANDARD HARDWARE

ITEM NO.	PART NUMBER	DESCRIPTION	QTY.
3	TR1001	RUBBER EDGE TRIM (TRIM LOK X2008 WITH GLUE)	31"
4	CL2520BP	CLIP NUT 1/4-20 STEEL BLACK PHOSPHATE	4
5	BHSCS252008SS	BHSCS 1/4-20 X 0.50 STAINLESS STEEL	6
6	HB252012ZPGR5	HEX BOLT 1/4-20 X .75 HEX BOLT ZINC PLATE GR5	2
7	FW2512ZP	FLAT WASHER Ø1/4" X .75 ZINC PLATE	4



NOTES:

1. JLP1800 = BARE STEEL OPTION
2. JLP1801 = BLACK POWDER COAT OPTION

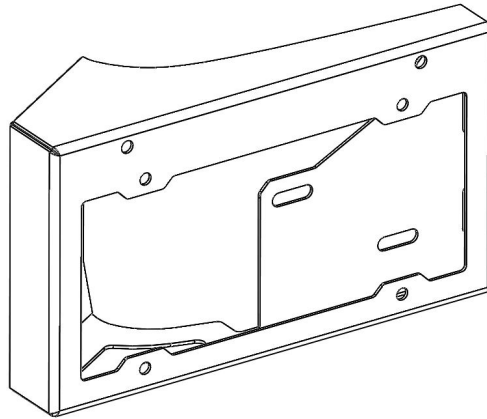
UNLESS OTHERWISE SPECIFIED:		NAME	DATE
DIMENSIONS ARE IN INCHES		MCH	6/8/2021
TOLERANCES: ±0.010		DRAWN	
ANGLES: ±0.5°		CHECKED	
THREE PLACE DECIMAL ±0.005		ENG APPR.	
MFG APPR.			
MATERIAL:			
N/A			
FINISH:			
SEE NOTES			
REPRODUCTION IN PART OR AS A WHOLE WITHOUT THE WRITTEN PERMISSION OF LOD LLC IS PROHIBITED.			
1016			
LOD LLC.			
DESCRIPTION:			
LICENSE PLATE RELOCATION KIT			
DWG. NO.		JLP1800	REV
JLP1801		JLP1801	A
SCALE: 1:2		SHEET SIZE: B	SHEET 1 OF 3



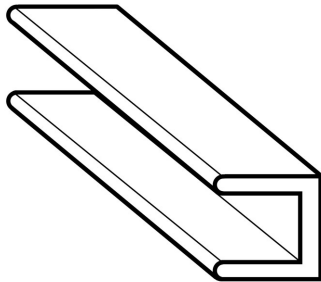
JL Jeep
DESTROYER SERIES
License Plate Relocation
SHIPPING SHEET

Packaged by:

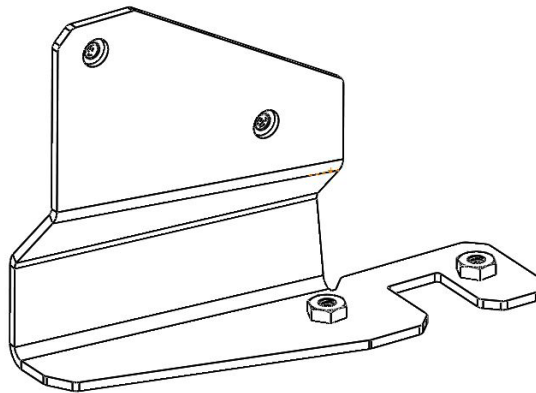
On:



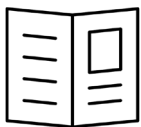
License Plate
Weldment
4JLP1800-01
(x1)



Rubber Edge
Trim (31")



License
Plate Mount
4JLP1800-02
(x1)



Instruction
Booklet



BOLT KIT
(may vary)



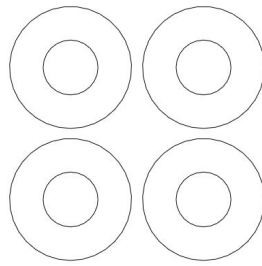


JL Jeep
DESTROYER SERIES
License Plate Relocation

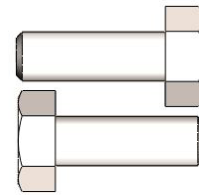
Bolt Kit

Packaged by:

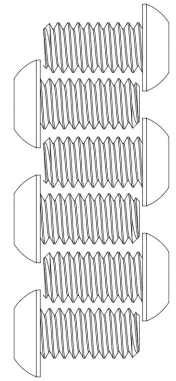
On:



Washer 1/4"
(x4)



Hex Bolt
1/4"-20 x 0.75"
(x2)



BHSCS
1/4"-20 x 0.5"
(x6)



Clip Nut
(x4)

